



WEIGHTED BRANCH - SET OF 2 PARALLEL

COLLECTION
TED BRADLEY

DESIGNER
TED BRADLEY

DESCRIPTION
This Weighted Branch series of light sculptures is inspired by the branches of aspen trees weighed down by a winter snow. More than a thousand warm, dimmable LEDs are embedded on the inside of each ring

MATERIALS
Porcelain, Metal

COLOURS
Please enquire about Ted Bradley Porcelain colour options

FINISHES
Satin Brass, Antique Brass, Blackened Brass, Darkened Bronze, Satin Nickel, Charcoal Nickel

CERTIFICATIONS
Please enquire. Contact us

DIMENSIONS
Width: 77.00" (195.58cm)
Depth: 28.00" (71.12cm)
Height: 12.00" (30.48cm)

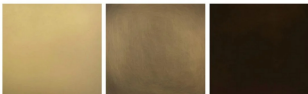
CUSTOMIZABLE
This product is customizable. Please [contact us](#) to find out more about this product.

ADDITIONAL DETAILS
Ring Size: Ø17.5" and 15"
Minimum Overall Height: 17"
Lamping: LED
Colour Temperature: 2400K, 2700K, 3000K, 4000K and 5000K

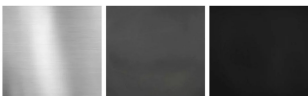
Handmade in Colorado



Metal Finishes



Satin Brass Antique Brass Darkened Bronze



Satin Nickel Charcoal Nickel Blackened Brass