

## WEIGHTED BRANCH - SET OF 2 CROSSED

**COLLECTION**  
TED BRADLEY

**DESIGNER**  
TED BRADLEY

**DESCRIPTION**

This Weighted Branch series of light sculptures is inspired by the branches of aspen trees weighed down by a winter snow. More than a thousand warm, dimmable LEDs are embedded on the inside of each ring

**MATERIALS**

Porcelain, Metal

**COLOURS**

Please enquire about Ted Bradley Porcelain colour options

**FINISHES**

Satin Brass, Antique Brass, Blackened Brass, Darkened Bronze, Satin Nickel, Charcoal Nickel

**CERTIFICATIONS**

Please enquire. Contact us

**DIMENSIONS**

Width: 76.00" (193.04cm)

Depth: 31.00" (78.74cm)

Height: 17.00" (43.18cm)

**CUSTOMIZABLE**

This product is customizable. Please [contact us](#) to find out more about this product.

**ADDITIONAL DETAILS**

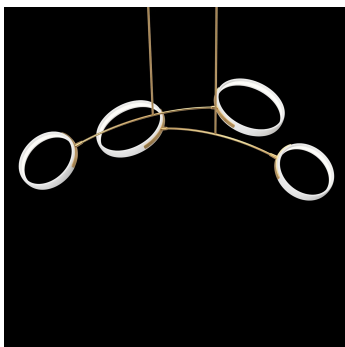
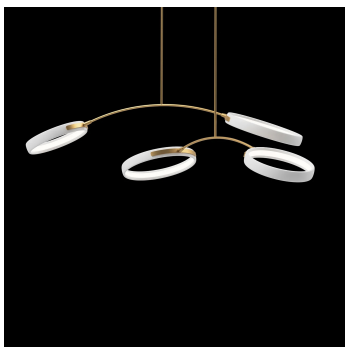
Ring Size: Ø17.5" and 15"

Minimum Overall Height: 24"

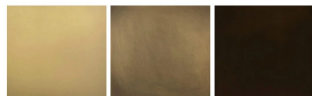
Lamping: LED

Colour Temperature: 2400K, 2700K, 3000K, 4000K and 5000K

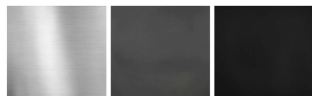
Handmade in Colorado



**Metal Finishes**



Satin Brass    Antique Brass    Darkened Bronze



Satin Nickel    Charcoal Nickel    Blackened Brass