

WEIGHTED BRANCH - SET OF 2 CROSSED

COLLECTION
TED BRADLEY

DESIGNER
TED BRADLEY

DESCRIPTION

This Weighted Branch series of light sculptures is inspired by the branches of aspen trees weighed down by a winter snow. More than a thousand warm, dimmable LEDs are embedded on the inside of each ring

MATERIALS

Porcelain, Metal

COLOURS

Please enquire about Ted Bradley Porcelain colour options

FINISHES

Satin Brass, Antique Brass, Blackened Brass, Darkened Bronze, Satin Nickel, Charcoal Nickel

CERTIFICATIONS

Please enquire. Contact us

DIMENSIONS

Width: 76.00" (193.04cm)

Depth: 31.00" (78.74cm)

Height: 17.00" (43.18cm)

CUSTOMIZABLE

This product is customizable. Please [contact us](#) to find out more about this product.

ADDITIONAL DETAILS

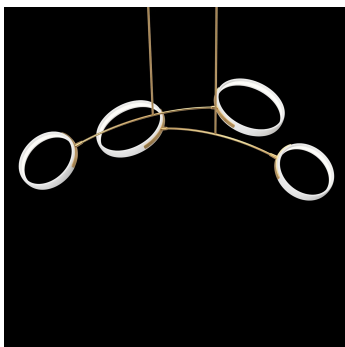
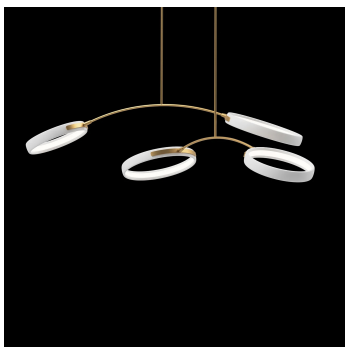
Ring Size: Ø17.5" and 15"

Minimum Overall Height: 24"

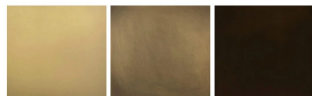
Lamping: LED

Colour Temperature: 2400K, 2700K, 3000K, 4000K and 5000K

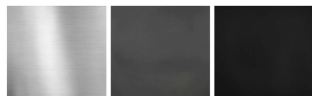
Handmade in Colorado



Metal Finishes



Satin Brass Antique Brass Darkened Bronze



Satin Nickel Charcoal Nickel Blackened Brass