



## PRODUCER PENDANT

**COLLECTION**  
TED BRADLEY

**DESIGNER**  
TED BRADLEY

**DESCRIPTION**

Exceptional craftsmanship. Unlike anything else. This sculpture is a feat of engineering. The wishbone arms are each cut from 30-lb blocks of solid brass for absolute precision. There are no visible wires - the arms are electrified with low voltage to power the ring (don't worry, it's safe!). There are no visible screws - the sculpture has a perfectly clean outer aesthetic - although there are over 20 tiny screws, nuts, washers, and other fasteners hidden away inside. The sculpture works well as a single or in multiples.

**MATERIALS**

Porcelain, Metal

**COLOURS**

Please enquire about Ted Bradley Porcelain colour options

**FINISHES**

Satin Brass, Antique Brass, Blackened Brass, Darkened Bronze, Satin Nickel, Charcoal Nickel

**CERTIFICATIONS**

Please enquire. Contact us

**DIMENSIONS**

Diameter: 18.00" (45.72cm)

Height: 14.00" (35.56cm)

**CUSTOMIZABLE**

This product is customizable. Please [contact us](#) to find out more about this product.

**ADDITIONAL DETAILS**

Ring Size: Ø17.5"

Minimum Overall Height: 19"

Lamping: LED

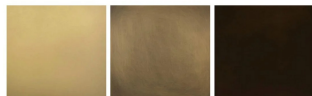
Colour Temperature: 2400K, 2700K, 3000K, 4000K and 5000K

Flushmount, set of 3 and sloped ceiling versions available

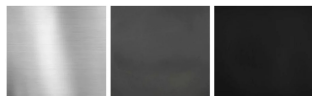
Handmade in Colorado



**Metal Finishes**



Satin Brass    Antique Brass    Darkened Bronze



Satin Nickel    Charcoal Nickel    Blackened Brass