



NEST - 3 RINGS ROUND

COLLECTION
TED BRADLEY

DESIGNER
TED BRADLEY

DESCRIPTION

This sculpture series is inspired by a bird's nest. A collection of disparate elements come together to create a beautiful whole. White porcelain rings are affixed to horizontal metal crossbars at various angles. More than a thousand warm, dimmable LEDs are embedded on the inside of each ring. In this design three rings are affixed to a vertical downrod, equally spaced from one another. This sculpture can be made in a linear or round format.

MATERIALS

Porcelain, Metal

COLOURS

Please enquire about Ted Bradley Porcelain colour options

FINISHES

Satin Brass, Antique Brass, Blackened Brass, Darkened Bronze, Satin Nickel, Charcoal Nickel

CERTIFICATIONS

Please enquire. Contact us

DIMENSIONS

Diameter: 46.00" (116.84cm)

Height: 17.00" (43.18cm)

CUSTOMIZABLE

This product is customizable. Please [contact us](#) to find out more about this product.

ADDITIONAL DETAILS

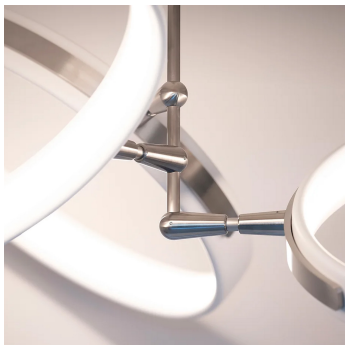
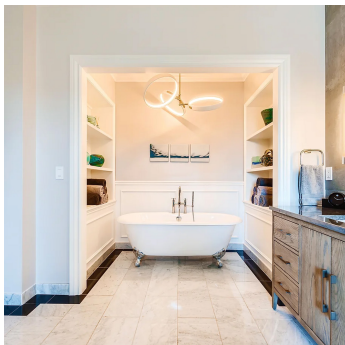
Ring Size: Ø22", 17.5" and 15" available

Minimum Overall Height: 18"

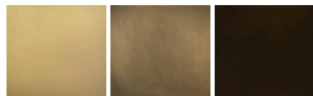
Lamping: LED

Colour Temperature: 2400K, 2700K, 3000K, 4000K and 5000K

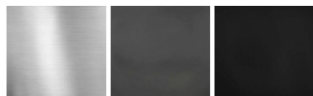
Handmade in Colorado



Metal Finishes



Satin Brass Antique Brass Darkened Bronze



Satin Nickel Charcoal Nickel Blackened Brass