

MONO PENDANTS COLUMN - SET OF 9

COLLECTION
TED BRADLEY

DESIGNER
TED BRADLEY

DESCRIPTION

These sculptures present the porcelain rings in vertical orientation, allowing the full profile of the ring to be seen. They are similar to the Swag Pendants, but the omission of the draping cords leads to a cleaner and more simplified aesthetic. The number of rings, size of rings, and spacing can be customized, allowing the designer to readily create a one-of-a-kind sculpture for their client.

MATERIALS

Porcelain, Metal

COLOURS

Please enquire about Ted Bradley Porcelain colour options

FINISHES

Satin Brass, Antique Brass, Blackened Brass, Darkened Bronze, Satin Nickel, Charcoal Nickel

CERTIFICATIONS

Please enquire. Contact us

DIMENSIONS

Diameter: 36.00" (91.44cm)

Height: 124.00" (314.96cm)

CUSTOMIZABLE

This product is customizable. Please [contact us](#) to find out more about this product.

ADDITIONAL DETAILS

Ring Size: Ø22", 17.5", 15" and 12" available

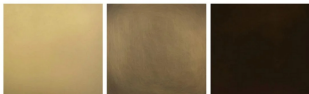
Minimum Overall Height: To be specified

Lamping: LED

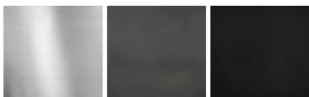
Colour Temperature: 2400K, 2700K, 3000K, 4000K and 5000K

Handmade in Colorado

Metal Finishes



Satin Brass Antique Brass Blackened Brass



Satin Nickel Charcoal Nickel Blackened Brass