

MONO PENDANTS COLUMN - SET OF 3

COLLECTION
TED BRADLEY

DESIGNER
TED BRADLEY

DESCRIPTION

The essence of Ted Bradley's sculptures are the porcelain rings. The sculptures shown here are celebrations of the rings, highlighting their form and character in their most essential state. Three rings of the same diameter cascade downward in a tight column. The number of rings, height, and spacing can be adjusted to fill a space of any size.

MATERIALS

Porcelain, Metal

COLOURS

Please enquire about Ted Bradley Porcelain colour options

FINISHES

Satin Brass, Antique Brass, Blackened Brass, Darkened Bronze, Satin Nickel, Charcoal Nickel

CERTIFICATIONS

Please enquire. Contact us

DIMENSIONS

Diameter: 32.00" (81.28cm)

Height: 60.00" (152.4cm)

CUSTOMIZABLE

This product is customizable. Please [contact us](#) to find out more about this product.

ADDITIONAL DETAILS

Ring Size: Ø22", 17.5" and 15" available

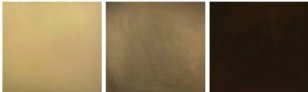
Minimum Overall Height: To be specified

Lamping: LED

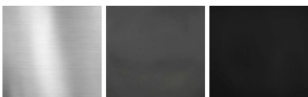
Colour Temperature: 2400K, 2700K, 3000K, 4000K and 5000K

Handmade in Colorado

Metal Finishes



Satin Brass Antique Brass Blackened Brass



Satin Nickel Charcoal Nickel Blackened Brass