

ECLIPSE TABLE LAMP

COLLECTION
TED BRADLEY

DESIGNER
TED BRADLEY

DESCRIPTION

Exceptional craftsmanship. Unlike anything else. The sculpture is inspired by a solar eclipse - one of nature's most visually powerful phenomena. It took nearly two years for me to design and perfect this piece. I explored over a dozen designs and settled on this one for its simplicity and iconic feel. There is no switch on this lamp - a gentle touch of the hand to the lamp base turns it on, off, and dims. The sculpture is inspired by a solar eclipse - one of nature's most visually powerful phenomena. The metal base is cut from 12lb of solid brass that keeps it stable despite its narrow width. The base is hand finished with the patina of your choice. There is no switch on the lamp - it is turned on, off, and dimmed with a gentle touch.

MATERIALS

Porcelain, Metal

COLOURS

Please enquire about Ted Bradley Porcelain colour options

FINISHES

Satin Brass, Antique Brass, Blackened Brass, Darkened Bronze, Satin Nickel, Charcoal Nickel

CERTIFICATIONS

Please enquire. Contact us

DIMENSIONS

SIZE 1

Depth: 3.25" (8.255cm)

Diameter: 15.00" (38.1cm)

SIZE 2

Depth: 3.25" (8.255cm)

Diameter: 17.50" (44.45cm)

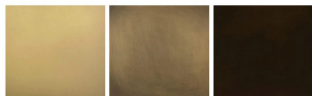
ADDITIONAL DETAILS

Ring Sizes: Ø17.5" or 15"

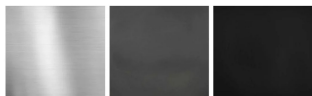
Lamping: LED

Colour Temperature: 2400K, 2700K, 3000K, 4000K and 5000K

Metal Finishes



Satin Brass Antique Brass Darkened Bronze



Satin Nickel Charcoal Nickel Blackened Brass

Handmade in Colorado