

## CONSTELLATION - SET OF 3 & 2 RINGS

**COLLECTION**  
TED BRADLEY

**DESIGNER**  
TED BRADLEY

### DESCRIPTION

The Constellation series is inspired by a constellation, where each porcelain ring is like a star in the night sky. When looking at the rings individually, they appear random and disconnected - the eyes dance without coming to rest on a single focal point. But stepping back and viewing the sculpture as a whole, it comes together into something cohesive and beautiful.

### MATERIALS

Porcelain, Metal

### COLOURS

Please enquire about Ted Bradley Porcelain colour options

### FINISHES

Satin Brass, Antique Brass, Blackened Brass, Darkened Bronze, Satin Nickel, Charcoal Nickel

### CERTIFICATIONS

Please enquire. Contact us

### DIMENSIONS

Width: 87.00" (220.98cm)

Depth: 36.00" (91.44cm)

Height: 6.00" (15.24cm)

### CUSTOMIZABLE

This product is customizable. Please [contact us](#) to find out more about this product.

### ADDITIONAL DETAILS

Ring Size: Ø22", 17.5" and 15" available

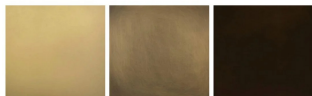
Minimum Overall Height: 12.5"

Lamping: LED

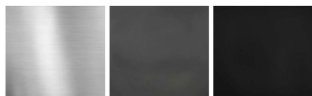
Colour Temperature: 2400K, 2700K, 3000K, 4000K and 5000K

Handmade in Colorado

#### Metal Finishes



Satin Brass    Antique Brass    Darkened Bronze



Satin Nickel    Charcoal Nickel    Blackened Brass