

CONSTELLATION - 5 RINGS - INVISIBLE

COLLECTION
TED BRADLEY

DESIGNER
TED BRADLEY

DESCRIPTION

Exceptional craftsmanship. Unlike anything else. Five porcelain rings of varying sizes are displayed in horizontal orientation. The sculpture is inspired by a constellation, where each porcelain ring is like a star in the night sky. When looking at the rings individually, they appear random and disconnected - the eyes dance without coming to rest on a single focal point. But stepping back and viewing the sculpture as a whole, it comes together into something cohesive and beautiful. The sculpture can cast gentle candlelight on a dining table or brighten an entire room.

MATERIALS

Porcelain, Metal

COLOURS

Please enquire about Ted Bradley Porcelain colour options

FINISHES

Satin Brass, Antique Brass, Blackened Brass, Darkened Bronze, Satin Nickel, Charcoal Nickel

CERTIFICATIONS

Please enquire. Contact us

DIMENSIONS

Width: 52.00" (132.08cm)

Depth: 52.00" (132.08cm)

Height: 29.00" (73.66cm)

CUSTOMIZABLE

This product is customizable. Please [contact us](#) to find out more about this product.

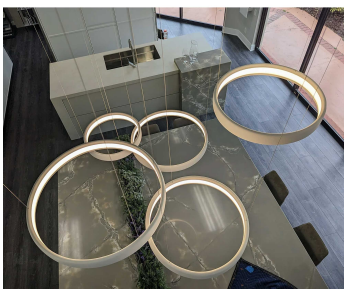
ADDITIONAL DETAILS

Ring Size: Ø22", 17.5" and 15" available

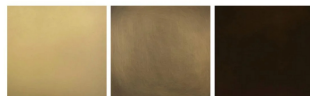
Minimum Overall Height: To be specified

Lamping: LED

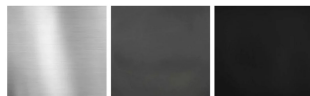
Colour Temperature: 2400K, 2700K, 3000K, 4000K and 5000K



Metal Finishes



Satin Brass Antique Brass Darkened Bronze



Satin Nickel Charcoal Nickel Blackened Brass

Handmade in Colorado