



CONSTELLATION - 4 RINGS

COLLECTION
TED BRADLEY

DESIGNER
TED BRADLEY

DESCRIPTION

The Constellation series is inspired by a constellation, where each porcelain ring is like a star in the night sky. When looking at the rings individually, they appear random and disconnected - the eyes dance without coming to rest on a single focal point. But stepping back and viewing the sculpture as a whole, it comes together into something cohesive and beautiful.

MATERIALS

Porcelain, Metal

COLOURS

Please enquire about Ted Bradley Porcelain colour options

FINISHES

Satin Brass, Antique Brass, Blackened Brass, Darkened Bronze, Satin Nickel, Charcoal Nickel

CERTIFICATIONS

Please enquire. Contact us

DIMENSIONS

SIZE 1

Width: 57.00" (144.78cm)

Depth: 28.00" (71.12cm)

Height: 6.00" (15.24cm)

SIZE 2

Diameter: 46.00" (116.84cm)

Height: 7.00" (17.78cm)

CUSTOMIZABLE

This product is customizable. Please [contact us](#) to find out more about this product.

ADDITIONAL DETAILS

Ring Size: Ø22", 17.5" and 15" available

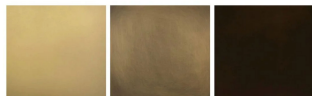
Minimum Overall Height: 12.5"

Lamping: LED

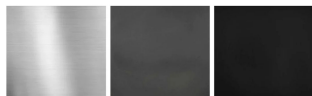
Colour Temperature: 2400K, 2700K, 3000K, 4000K and 5000K



Metal Finishes



Satin Brass Antique Brass Darkened Bronze



Satin Nickel Charcoal Nickel Blackened Brass

Handmade in Colorado