



## CEILING VINE - 7 RINGS

**COLLECTION**  
TED BRADLEY

**DESIGNER**  
TED BRADLEY

**DESCRIPTION**

Exceptional craftsmanship. Unlike anything else. This series of light sculptures is inspired by vines in a lush forest, alive with growth and exploring the surface of the ceiling. In this design a central larger porcelain ring anchors the vines of six smaller rings on the ends.

**MATERIALS**

Porcelain, Metal

**COLOURS**

Please enquire about Ted Bradley Porcelain colour options

**FINISHES**

Satin Brass, Antique Brass, Blackened Brass, Darkened Bronze, Satin Nickel, Charcoal Nickel

**CERTIFICATIONS**

Please enquire. Contact us

**DIMENSIONS**

Width: 103.00" (261.62cm)

Depth: 92.00" (233.68cm)

Height: 7.00" (17.78cm)

**CUSTOMIZABLE**

This product is customizable. Please [contact us](#) to find out more about this product.

**ADDITIONAL DETAILS**

Ring Sizes: Ø22", 17.5" and 15"

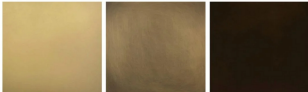
Lamping: LED

Colour Temperature: 2400K, 2700K, 3000K, 4000K and 5000K

Sloped ceiling version available

Handmade in Colorado

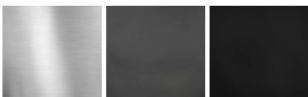
**Metal Finishes**



Satin Brass

Antique Brass

Blackened Brass



Satin Nickel

Charcoal Nickel

Blackened Brass