



CEILING VINE - 5 RINGS

COLLECTION
TED BRADLEY

DESIGNER
TED BRADLEY

DESCRIPTION
Exceptional craftsmanship. Unlike anything else. This series of light sculptures is inspired by vines in a lush forest, alive with growth and exploring the surface of the ceiling. In this design a central larger porcelain ring anchors the vines of four smaller rings on the ends.

MATERIALS
Porcelain, Metal

COLOURS
Please enquire about Ted Bradley Porcelain colour options

FINISHES
Satin Brass, Antique Brass, Blackened Brass, Darkened Bronze, Satin Nickel, Charcoal Nickel

CERTIFICATIONS
Please enquire. Contact us

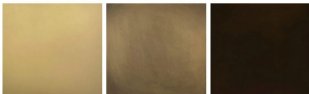
DIMENSIONS
Width: 92.00" (233.68cm)
Depth: 61.00" (154.94cm)
Height: 7.00" (17.78cm)

CUSTOMIZABLE
This product is customizable. Please [contact us](#) to find out more about this product.

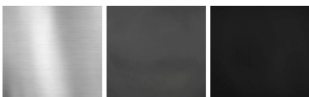
ADDITIONAL DETAILS
Ring Sizes: Ø22", 17.5" and 15"
Lamping: LED
Colour Temperature: 2400K, 2700K, 3000K, 4000K and 5000K
Sloped ceiling version available

Handmade in Colorado

Metal Finishes



Satin Brass Antique Brass Blackened Brass



Satin Nickel Charcoal Nickel Blackened Brass