



## CEILING VINE - 4 RINGS ROUND

**COLLECTION**  
TED BRADLEY

**DESIGNER**  
TED BRADLEY

**DESCRIPTION**  
Exceptional craftsmanship. Unlike anything else. This series of light sculptures is inspired by vines in a lush forest, alive with growth and exploring the surface of the ceiling. In this design a central larger porcelain ring anchors the vines of three smaller rings on the ends.

**MATERIALS**  
Porcelain, Metal

**COLOURS**  
Please enquire about Ted Bradley Porcelain colour options

**FINISHES**  
Satin Brass, Antique Brass, Blackened Brass, Darkened Bronze, Satin Nickel, Charcoal Nickel

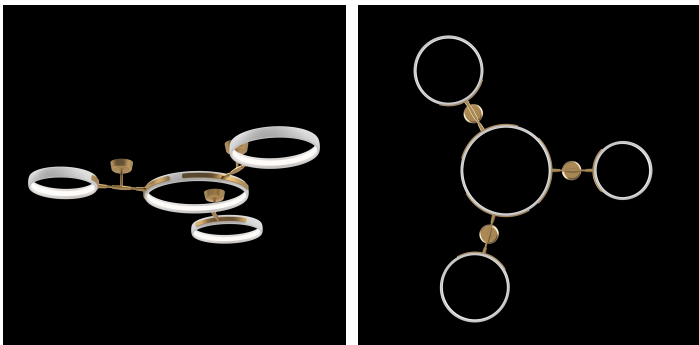
**CERTIFICATIONS**  
Please enquire. Contact us

**DIMENSIONS**  
Width: 72.00" (182.88cm)  
Depth: 60.00" (152.4cm)  
Height: 7.00" (17.78cm)

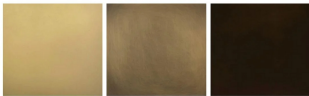
**CUSTOMIZABLE**  
This product is customizable. Please [contact us](#) to find out more about this product.

**ADDITIONAL DETAILS**  
Ring Sizes: Ø22", 17.5" and 15"  
Lamping: LED  
Colour Temperature: 2400K, 2700K, 3000K, 4000K and 5000K  
Sloped ceiling version available

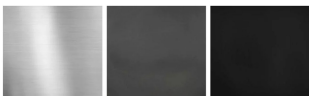
Handmade in Colorado



**Metal Finishes**



Satin Brass    Antique Brass    Darkened Bronze



Satin Nickel    Charcoal Nickel    Blackened Brass