

CEILING VINE - 4 RINGS LINEAR

COLLECTION
TED BRADLEY

DESIGNER
TED BRADLEY

DESCRIPTION

Exceptional craftsmanship. Unlike anything else. This series of light sculptures is inspired by vines in a lush forest, alive with growth and exploring the surface of the ceiling. In this design a central larger porcelain ring and medium sized ring anchor the vines of two smaller rings on the ends.

MATERIALS

Porcelain, Metal

COLOURS

Please enquire about Ted Bradley Porcelain colour options

FINISHES

Satin Brass, Antique Brass, Blackened Brass, Darkened Bronze, Satin Nickel, Charcoal Nickel

CERTIFICATIONS

Please enquire. Contact us

DIMENSIONS

Width: 86.00" (218.44cm)

Depth: 38.00" (96.52cm)

Height: 7.00" (17.78cm)

CUSTOMIZABLE

This product is customizable. Please [contact us](#) to find out more about this product.

ADDITIONAL DETAILS

Ring Sizes: Ø22", 17.5" and 15"

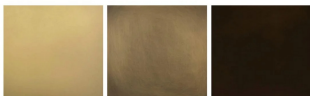
Lamping: LED

Colour Temperature: 2400K, 2700K, 3000K, 4000K and 5000K

Sloped ceiling version available

Handmade in Colorado

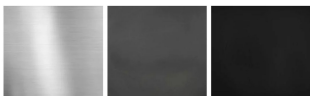
Metal Finishes



Satin Brass

Antique Brass

Darkened Bronze



Satin Nickel

Charcoal Nickel

Blackened Brass