



## BEARING FRUIT - 3 RINGS TILTED

**COLLECTION**  
TED BRADLEY

**DESIGNER**  
TED BRADLEY

### DESCRIPTION

White porcelain rings hang from parallel metal tubes with slight bends at their lowest point. Warm, dimmable LEDs are inlaid on the inside surface of each ring. The sculpture is inspired by ripe fruits hanging heavy from a vine or branch. More than a thousand warm, dimmable LEDs are embedded on the inside of each ring.

### MATERIALS

Porcelain, Metal

### COLOURS

Please enquire about Ted Bradley Porcelain colour options

### FINISHES

Satin Brass, Antique Brass, Blackened Brass, Darkened Bronze, Satin Nickel, Charcoal Nickel

### CERTIFICATIONS

Please enquire. Contact us

### DIMENSIONS

Diameter: 40.00" (101.6cm)

Height: 32.00" (81.28cm)

### CUSTOMIZABLE

This product is customizable. Please [contact us](#) to find out more about this product.

### ADDITIONAL DETAILS

Ring Sizes: Ø22", 17.5" and 15" available

Minimum Overall Drop: 32"

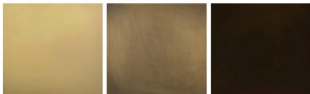
Lamping: LED

Colour Temperature: 2400K, 2700K, 3000K, 4000K and 5000K

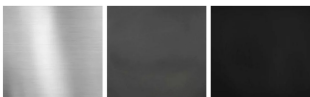
Sloped ceiling version available

Handmade in Colorado

#### Metal Finishes



Satin Brass    Antique Brass    Blackened Brass



Satin Nickel    Charcoal Nickel    Blackened Brass

