



BEARING FRUIT - 2 RINGS

COLLECTION
TED BRADLEY

DESIGNER
TED BRADLEY

DESCRIPTION

White porcelain rings hang from parallel metal tubes with slight bends at their lowest point. Warm, dimmable LEDs are inlaid on the inside surface of each ring. The sculpture is inspired by ripe fruits hanging heavy from a vine or branch. More than a thousand warm, dimmable LEDs are embedded on the inside of each ring.

MATERIALS

Porcelain, Metal

COLOURS

Please enquire about Ted Bradley Porcelain colour options

FINISHES

Satin Brass, Antique Brass, Blackened Brass, Darkened Bronze, Satin Nickel, Charcoal Nickel

CERTIFICATIONS

Please enquire. Contact us

DIMENSIONS

Width: 40.00" (101.6cm)

Height: 28.00" (71.12cm)

CUSTOMIZABLE

This product is customizable. Please [contact us](#) to find out more about this product.

ADDITIONAL DETAILS

Ring Sizes: Ø22", 17.5" and 15" available

Minimum Overall Drop: 28"

Lamping: LED

Colour Temperature: 2400K, 2700K, 3000K, 4000K and 5000K

Sloped ceiling version available

Handmade in Colorado

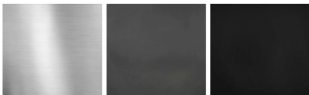
Metal Finishes



Satin Brass

Antique Brass

Blackened Brass



Satin Nickel

Charcoal Nickel

Blackened Brass